

## AQUABLAST® FR 1000

- Spray bar driven by reaction force of the water jets.
- Wear resistant rotary action with labyrinth seal.
- Optional pressure on/off control. Mechanical bypass valve or electric in 4-pole system signal to pump. Special controls available upon request.
- On/Off control by twin trigger action.
- Height adjustable spray bar.
- Three wheel carriage.



### TYPICAL APPLICATIONS

- Grid cleaning.
- Floor cleaning.
- Coating removal.

### TECHNICAL DATA

Working width:	300 mm	500 mm
Operating pressure max.:	1000 bar	1000 bar
Flow rate max.:	160 l/min	160 l/min
Pressure loss at 100 l/min.:	5 bar	5 bar
Pump power max.:	170 kW	170 kW
Speed of rotation:	3000 min <sup>-1</sup>	1500 min <sup>-1</sup>
Connection thread:	G ¾"	G ¾"
Length approx.:	1610 mm	1883 mm
Height approx.:	950 mm	940 mm
Unit width approx.:	370 mm	550 mm
Weight approx.:	115.0 kg	145.5 kg

### ACCESSORY (OPTIONAL):

Description	Code no.
<b>SPRAY BAR</b> for concrete removal (abrasive action)	<b>00.03567.1299</b>

Pressure ON / OFF	Code no.	
	Ø 300 mm	Ø 500 mm
mechanical	<b>00.00078.0025</b>	<b>09.00661.0180</b>
electrical	---	<b>09.00661.0179</b>

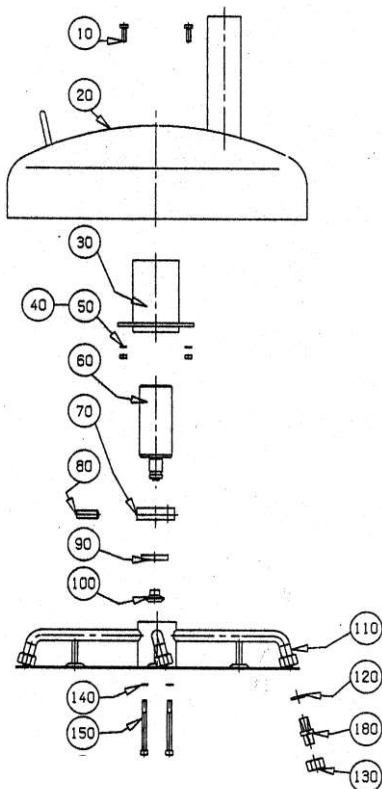
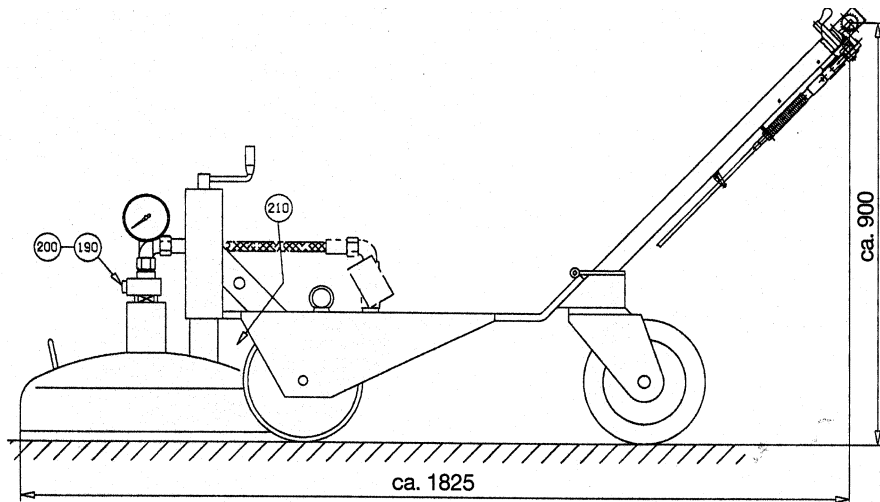


**Connection nipple see reverse!**  
**Nozzle inserts 4 x design "A", "B" or "M".**

# AQUABLAST® FR 1000

## ACCESSORIES AND SPARES

13.D.2 - 07/2021



Item no.	Qty.	Description	Code no. / per single item	
10	4	Screw	02.00671.0105	
20	1	Spray bar housing	00.00387.0002	
30	1	Sleeve	00.01750.0419	
40	4	Spring washer	02.00380.0005	
50	4	Nut	02.00309.0005	
60	1	Rotary joint	00.00062.0105	
70	1	Ring	01.03465.0544	
80	1	Set screw	02.00888.0308	
90	1	Split ring	01.03465.0619	
100	1	Seal lens	01.00727.0058	
110	1	Spray bar, cpl. items 70 - 150	00.03567.1230	
120	4	O-ring	04.00730.0033	
130	4	Retaining nut	04.02833.0064	
140	4	Spring washer	02.00384.0006	
150	4	Screw	02.00825.0009	
180	4	Nozzle insert design "A", "B" or "M"	siehe Kap. 12	
190	1	Glyd ring	04.00731.0222	
200	1	<u>Connection nipple</u> <u>Operating pressure</u>		
		M 22 x 1.5 DKO	i/d 10      1500 bar	01.02981.0335
		M 22 x 1.5 DKL	i/d 12      1350 bar	01.02981.0077
		M 24 x 1.5 DKO	i/d 12      1800 bar	01.02981.0197
		M 30 x 1.5 DKM	i/d 20      1050 bar	01.02981.0154
		M 36 x 2 DKO	i/d 20      1400 bar	01.02981.0331
		M 42 x 2 DKO	i/d 25      950 bar	01.02981.0355
210	1	Stability weight, 30 kg	01.01390.0010	
	2	Screw	02.00671.0121	
	2	Spring washer	02.00380.0007	

**HAMMELMANN®**