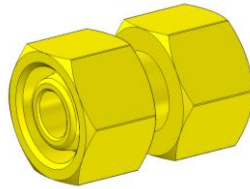
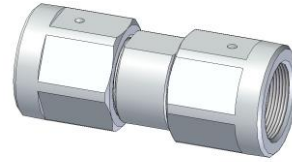


# DISCHARGE FITTINGS

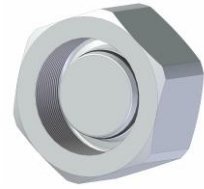
## BLOCK BALL VALVES, DOUBLE UNION NUTS AND ELBOW FITTINGS, SEALING CAPS

**1**

DKL / DKM



DKO-S

**2****3**

BLOCK BALL VALVES to shut off a pressure outlet, male thread both ends						
<b>1</b>	Connection thread, both ends		Material	Hose i/d [mm]	Pressure [bar]	Code no.
	M 22 x 1,5	DKL	Stahl	12	500	04.01561.0019
	M 22 x 1,5	DKL	stainless	12	500	04.01561.0051
	M 24 x 1,5 <sup>1) 3)</sup>	DKO	stainless	12	1500	00.01561.0013
	M 24 x 1,5 <sup>2) 3)</sup>	DKO	stainless	12	1600	00.01561.0006
	M 30 x 1,5	DKM	steel	20	400	04.01561.0021
	M 36 x 2	DKO	steel	20	1600	04.01561.0176
	M 38 x 1,5	DKM	steel	25	315	04.01561.0022
	M 42 x 2	DKO	stainless	25	1000	04.01561.0110

<sup>1)</sup> standard design<sup>2)</sup> industrial design<sup>3)</sup> other available double nipple see 19.B (G ¾“)

DOUBLE UNION NUTS to fit a block ball valve to pressure outlet						
<b>2</b>	Connection thread, both ends		Material	Hose i/d [mm]	Pressure [bar]	Code no.
	M 22 x 1,5	DKO	stainless	10	1500	00.05979.0019
	M 22 x 1,5	DKO-L*	stainless	12	750	00.05979.0020
	M 22 x 1,5	DKL	stainless	12	750	00.05979.0023
	M 24 x 1,5	DKO	stainless	12	1800	00.05979.0016
	M 36 x 2	DKO	stainless	20	1600	00.05979.0017
	M 42 x 2	DKO	stainless	25	1500	00.05979.0018

\* only for 24°-cone!!!

SEALING CAPS for double nipples						
<b>3</b>	Connection thread, both ends		Material	Hose i/d [mm]	Pressure [bar]	Code no.
	M 24 x 1,5	DKO	stainless	12	1800	00.01898.0003
	M 36 x 2	DKO	stainless	20	1600	00.01898.0002



Use Silver Goop (code no. 04.00982.0010) as lubricant for stainless steel alloys!  
Not applicable for aluminum and magnesium!

**HAMMELMANN®**