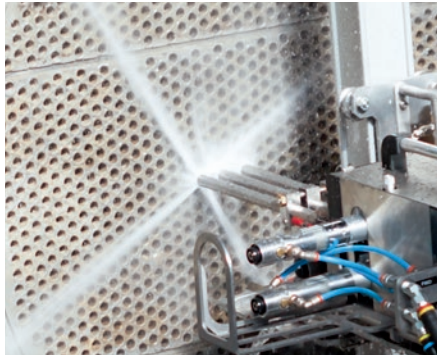


As variable as your cleaning applications

HAMMELMANN®

HDP 500 Diesel driven pump unit with an electrical 3 speed transmission only uses that energy needed for the job to be done.



3rd Gear

Full pump power as typically employed for tank cleaning

This pump unit enables you to adapt the flow rate to suit the work you are doing. The 3 transmission ratios 1:1, 1:2 and 1:6 cover the most important areas of industrial cleaning.

The biggest benefit for you is the reduced diesel fuel consumption as you only generate the power you actually need.

2nd Gear

Medium pump power for pipe and tube bundle cleaning

For manual blasting gun work the high pressure pump shaft only rotates at 1/6 th of maximum engine speed thereby saving up to 54 litres of fuel per hour.*

The low speed reduces wear on the pump and engine by operating in the partial load range.

1st Gear

Low pump power for manual blasting gun work

- The environmental benefits include lower CO₂ and noise emissions
- Lower torque on the engine in gears 2 and 3 while utilizing the same operating pressure
- No energy loss through hot overflow water. The feed tank stays cool.
- Each gear is simply selected when the engine is not running.

*Example:

HDP 500 fuel consumption, Piston/Plunger-Ø 50 mm, with VOLVO TAD 1672 VE TIER 4 FINAL and 3 speed manual transmission

Technical Data

Engine speed	Gear	Pump -		Flow rate	Operating pressure	Specific fuel consumption	Motor power rating	Fuel consumption
		speed	power rating					
1800 1/min	3	1800 1/min	500 kW	262 l/min	1040 bar	205 g/kw h	520 kW	125 l/h
1100 1/min	3	1100 1/min	305 kW	160 l/min	1040 bar	193 g/kw h	315 kW	72 l/h
1800 1/min	2	900 1/min	250 kW	132 l/min	1040 bar	210 g/kw h	265 kW	65 l/h
1100 1/min	2	550 1/min	152 kW	80 l/min	1040 bar	200 g/kw h	165 kW	39 l/h
1800 1/min	1	300 1/min	83 kW	44 l/min	1040 bar	250 g/kw h	95 kW	28 l/h
1100 1/min	1	183 1/min	51 kW	27 l/min	1040 bar	240 g/kw h	62 kW	18 l/h

Fuel saving with transmission when working with a manual blasting gun 54 l/hour, CO₂ reduction 140 kg/hour



HDP 500 Diesel driven high-pressure pump unit with electrical 3 speed transmission

Type overview



The following data table shows just a few examples of maximum performance combinations from the wide range

Model	Plunger Ø	Operating pressure	Flow rate	Engine power	Pump power
AQUAJET 50	28 mm	3000 bar	77 l/min	up to 571 kW	500 kW
	35 mm	2200 bar	122 l/min		
S 1600-50	40 mm	1600 bar	166 l/min		
	45 mm	1290 bar	212 l/min		
S 1100-50	50 mm	1040 bar	262 l/min		

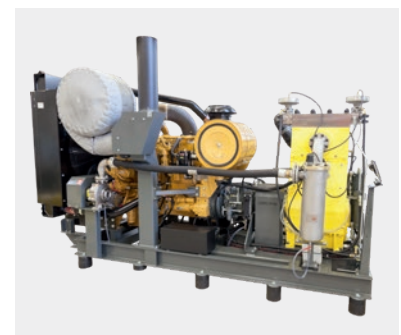
Technical data

All „S Class“ and „Aquajet“ units are complete with :

- Rigid base frame with anti vibration mounting feet
- Insulated spiral silencer installation (32 dB(A) reduction) with exhaust and rain cap, particle filter or Ad Blue
- ES 3 electronic control and monitoring system with digital display for pump and diesel engine
- Pneumatic system with shaft driven compressor, air tank and bypass control
- Pneumatic pressure regulating valve or bypass valve
- Stainless steel suction side installation with boost pump and water filter („S Class“: 200µ & 10µ „Aquajet“: 1 µ)

There are optional extras available which include pump head lifting device, heating systems, water tanks and fuel tanks.

The series 50 „S Class“ and „Aquajet“ units can be built into 20 ft. or 25 ft. sound damped containers, sound damped aluminum truck bodies or trailer containers (BDF).



Hammelmann GmbH

Carl-Zeiss-Straße 6–8
59302 Oelde • Germany
mail@hammelmann.de

Tel.: (0) 25 22 / 76 - 0
Fax: (0) 25 22 / 76 - 140
www.hammelmann.com

HAMMELMANN®