

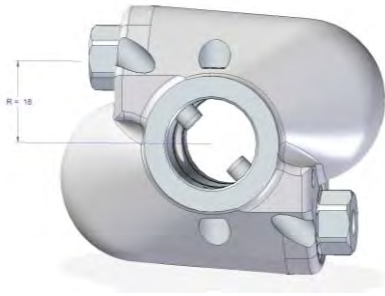
AQUAMAT®

NOZZLE HOLDERS

DESIGN “L”

16.A.2 – 09/18

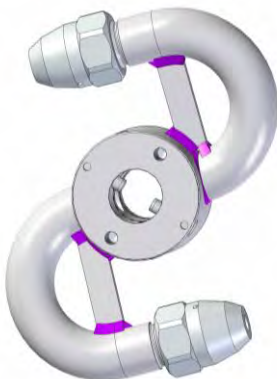
Nozzle holder “S-18”
for design “L”
up to 1200 bar
for very small tank openings



Nozzle holder “V”
for design “L”
up to 1800 bar
choice of nozzle arm lengths



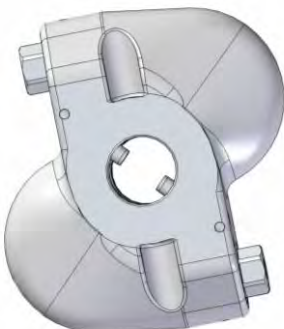
Nozzle holder “S-56”
up to 1000 bar



Nozzle holder “V”
for design “L”
up to 1500 bar
choice of nozzle arm lengths
suitable for very large vessels



Nozzle holder “S-35”
up to 1500 bar



HAMMELMANN®

AQUAMAT®

TANK CLEANING UNITS (TCU)

DESIGN “L” / NOZZLE HOLDER

16.B.1 – 09/18

Basic unit (resistant to demineralised water) without nozzle holder

Design	Quantity of nozzles	Max. operating press. [bar]	Max. flow rate [l/min] at $\Delta P = 52$ bar	Weight [kg]	Code no.
L 1500 - PLUS stainless steel	2	1500	300	11,5	00.01329.0020
L 1500 - PLUS titan	2	1500	300	8,1	00.01329.0018
L 1800 - PLUS stainless steel	2	1800	200	11,5	00.01329.0022

Nozzle holder for nozzles design “A” (not included in price for tank cleaning head)				
Nozzle holder lever arm [mm]	Max. operating press. [bar]	Min. diameter ¹⁾ [mm]	Min. working space ²⁾ [mm]	Code no.
10 S	1500	125	160	00.01599.0572
13 S	1800	150	150	00.01599.0393
14 V	1800	150	190	00.01599.0394
18 S	1200	125	150	00.01599.0308
18 S+	1200	---	---	00.01599.0314
35 S	1500	125	150	00.01599.0316
35 S+	1500	---	---	00.01599.0318
56 S	1000	135	190	00.01599.0320
56 S+	1000	---	---	00.01599.0200
85 S	1000	140	240	00.01599.0321

HAMMELMANN®

TANK CLEANING UNITS (TCU) DESIGN “L” / NOZZLE HOLDER

Extension nozzle holder					
Nozzle holder lever arm [mm]		Max. operating press. [bar]	Min. diameter ¹⁾ [mm]	Min. working space ²⁾ [mm]	Code no.
10 V	without	1500	130	260	00.01599.0549
18 V	without	1500	140	220	00.01599.0319
	110 mm	1500	150	360	00.01599.0309
	300 mm	1500	150	740	00.01599.0310
	500 mm	1500	150	1140	00.01599.0311
	750 mm	1500	150	1640	00.01599.0312
	1000 mm	1500	150	2140	00.01599.0313
35 V	without	1500	140	250	00.01599.0322
	110 mm	1500	160	390	00.01599.0323
	300 mm	1500	160	750	00.01599.0324
	500 mm	1500	160	1150	00.01599.0325
	750 mm	1500	160	1650	00.01599.0326
	1000 mm	1500	160	2150	00.01599.0327
56 V	without	1800	145	220	00.01599.0520
85 V	without	1800	145	270	00.01599.0533
100 V	without	1500	165	295	00.01599.0532
100 V	300 mm	1500	260	690	00.01599.0247

+ = suitable for impact protection

¹⁾ Min. diameter of tank orifice (manual deployment)

²⁾ Min. diameter of tank orifice (automatic deployment)
Dimensions with impact protection upon request.

AQUAMAT®

TANK CLEANING UNITS (TCU)

DESIGN “L” / NOZZLE HOLDER

16.B.3 – 09/18

Nozzle holder for nozzles design “L” (not included in price for tank cleaning head)				
Nozzle holder lever arm [mm]	Max. operating press. [bar]	Min. diameter ¹⁾ [mm]	Max. flow rate [l/min] at $\Delta P = 10$ bar	Code no.
14 V	1600	150	220	00.01599.0392
18 S	1200	125	170	00.01599.0315
18 S+	1200	---	---	00.01599.0356

+ = suitable for impact protection

¹⁾ Min. diameter of tank orifice (manual deployment)

²⁾ Min. diameter of tank orifice (automatic deployment)
Dimensions with impact protection upon request.

Nozzle holder fitting	Code no.
Hexagon screw	01.04750.0063
Washer	02.00440.0008

Special tool for mounting of TCU “L 1500-PLUS” & TCU “L 1800-PLUS”	Code no.
for tool kit cpl.	00.06252.0005

⇓
or in
individual tools
⇓

for sealing installation	01.06224.0149
	01.06224.0183
for coupling	01.06224.0088
for bushing (Ø 8 mm)	01.06224.0073
for bushing (Ø 10 mm)	01.06224.0074



Accessories such as extension lances, double nipples and swivelling pulling eyes
⇒ see chapter 16.F!

Selection of suitable rotary nozzle arm and rotation speed

Note!

For nozzle calculation, to determine the drive torque and the flow rate, please refer to:

<https://www.water-jetting-calculator.com/tankcleaningunit>

HAMMELMANN®