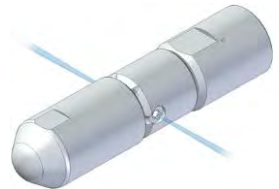


PIPE CLEANING NOZZLES - SELF SPINNING

2500 BAR, POLISHER WITH MAGNETIC BRAKE FOR REDUCED SPEED AND MAX. CUTTING POWER, NOZZLE INSERTS

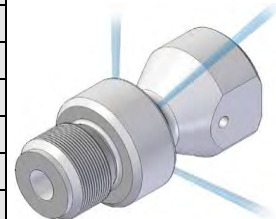
Nozzle Ø [mm]	Connection thread female Hose ID	Tube Ø [mm]		Nozzles	Output at 2500 bar (incl. leakage) [l/min]		Code no.
		min.	max.				
19	M 14 x 1,5 LH DN 5	25	45	2 x Ø 0,50 radial	approx. 17	a, c	04.00786.0053
		25	45	2 x Ø 0,60 radial	approx. 20	a, c	04.00786.0051
		25	45	2 x Ø 0,70 radial	approx. 24	a, c	04.00786.0052



- a) with nozzle inserts b) bronze rotor c) stainless steel rotor

The driving nozzles are installed as an adapter between the lance or hose and the *TurboJet*. The driving nozzle has 3 angled bores in the pulling direction which drives the turbo jet into the tube by the reaction force of the water emitting the bores. The diameter of the driving bores depends on by the application. More driving nozzles are available upon request.

Max. Ø drive nozzle set [mm]	Connection thread Hose ID	Operating pressure [bar]	Nozzles	Output at 1000 bar [l/min]	Code no.
13	G 1/8" male M 8 female DN 4	1000	without	---	03.00797.0011
			3 x Ø 0,40 pull	approx. 6	01.00797.0089
			3 x Ø 0,60 pull	approx. 13	01.00797.0077
			3 x Ø 0,70 pull	approx. 18	01.00797.0096
			3 x Ø 0,80 pull	approx. 23	01.00797.0072
			3 x Ø 1,00 pull	approx. 35	01.00797.0073
13	G 1/8" male M 10 x 1 fem. DN 6	1000	without	---	03.00797.0010
			3 x Ø 0,50 pull	approx. 9	01.00797.0076
			3 x Ø 0,60 pull	approx. 13	01.00797.0075
			3 x Ø 0,80 pull	approx. 23	01.00797.0070
			3 x Ø 1,00 pull	approx. 35	01.00797.0071
18	G 1/4" male M 8 female DN 4	1000	without	---	03.00797.0009
			3 x Ø 0,40 pull	approx. 6	01.00797.0090
			3 x Ø 0,80 pull	approx. 23	01.00797.0065
			3 x Ø 1,00 pull	approx. 35	01.00797.0066
			3 x Ø 1,20 pull	approx. 51	01.00797.0067
18	G 1/4" male M 10 x 1 fem. DN 6	1000	without	---	03.00797.0008
			3 x Ø 0,60 pull	approx. 13	01.00797.0074
			3 x Ø 0,80 pull	approx. 23	01.00797.0062
			3 x Ø 1,00 pull	approx. 35	01.00797.0063
			3 x Ø 1,10 pull	approx. 43	01.00797.0091
			3 x Ø 1,20 pull	approx. 51	01.00797.0064



ACCESSORIES TURBOJETS

14.C.4 – 05/17

Max. Ø drive nozzle set [mm]	Connection thread Hose ID	Operating pressure [bar]	Nozzles	Max. flow rate [l/min]	Code no.
19	M 14 x 1,5 LH male/female DN 5	3000	3 x pull design S	approx. 30	01.00797.0093
18	M 14 x 1,5 LH male/female DN 5	2800	3 x pull design W	approx. 30	01.00797.0094
18	9/16"-18 UNF LH male/female DN 5	2800	3 x pull design W	approx. 30	01.00797.0095



SEAL RING FOR *TURBOJET* AND "DRIVE NOZZLE SET", MAX. 1000 BAR

for M 8	02.01709.0001
for M 10 x 1 or G 1/8"	02.01709.0002
for G 1/4"	04.00706.0022



HAMMELMANN®