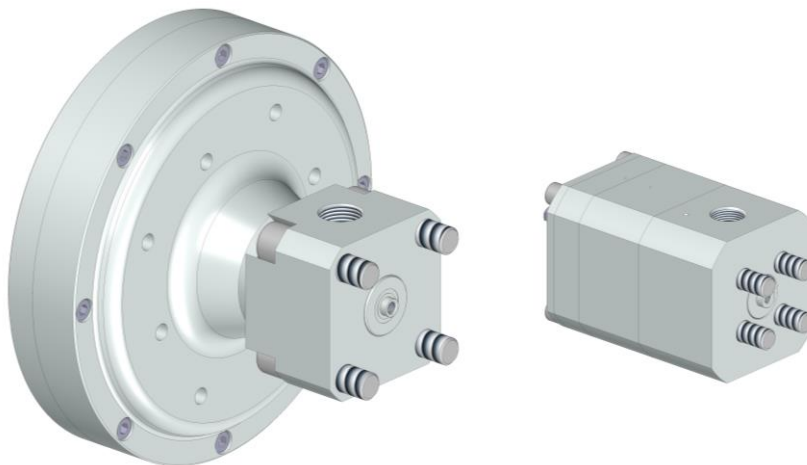


# BYPASS VALVES UP TO 4500 BAR

08.K.1 – 09/18

## Bypass valve



**Code no.**  
**00.05907.0047**

**Code no.**  
**00.05907.0052**

Pneumatically controlled 2/2 way bypass valve to switch over to de-pressurised circulation.				
max. operating pressure	Pump type	Max. flow rate	Overflow connection	Code no.
3200 bar	HDP 70 - HDP 300	50 l/min.	G 3/4"	00.05907.0045
3200 bar	HDP 300 - HDP 300	100 l/min.	G 3/4"	00.05907.0046
3200 bar	HDP 500 / HDP 800	100 l/min.	2 x G 3/4" *	00.05907.0047
			necessary overflow connection	00.02515.0298
4000 bar		50 l/min.	G 3/4"	00.05907.0044
4500 bar	For ultra high pressure applications e.g. cutting systems	25 l/min.	M 30 x 2 DKL	00.05907.0052
	<b>Especially for</b>	<b>Plunger dia.</b>	<b>Max. operating pressure</b>	
	HDP 20	8 - 10 mm	3500 bar	
	HDP 40 / HDP 70	12 mm	3800 bar	
		15 - 17,5 mm	2400 bar	
	HDP 140 - HDP 300	15 mm	4000 bar	
<b>Overflow line</b> to the tank, G 3/4" connection				00.02515.0229
<b>Overflow line</b> to the tank, G 3/4" connection, stainless steel				00.02515.0258
<b>Overflow line</b> to the tank, G 1" connection, in combination with a conversion kit and a standard pressure regulating valve				00.02515.0285
<b>Doppelnippel</b> - G 3/4" / G 1" connecton				04.02981.0038

\* for HP hose length > 80 m.

### NOTE

**Connection fittings between pressure regulating valve and pump head  
⇒ see chapter 8. H.**

**HAMMELMANN®**