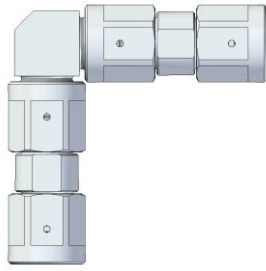


# DISCHARGE FITTINGS, BLOCK BALL VALVES, DOUBLE UNION NUTS AND ELBOW FITTINGS

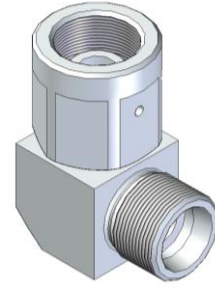
08.E.3 – 09/18



7



8



9

ELBOW FITTINGS 90° for union nuts both ends							
7	Conn. thread, both ends		Material	Hose i/d [mm]	Pressure [bar]	Code no.	
	M 18 x 1,5	DKL	stainless	10	460	upon request	
	M 22 x 1,5	DKL	steel	12	400	upon request	
	M 22 x 1,5	DKO	stainless	10	1500	(2x) (1x)	00.05979.0019 01.05991.0001
	M 24 x 1,5	DKO	stainless	12	1800	(2x) (1x)	00.05979.0016 01.05991.0002
	M 36 x 2	DKO	stainless	20	1600	(2x) (1x)	00.05979.0017 01.05991.0003
	M 42 x 2	DKO	stainless	25	1000	(2x) (1x)	00.05979.0018 01.05991.0004

ELBOW FITTINGS 90° on one side a cap nut for pressure discharge, on the other side a male thread							
8	Conn. thread, both ends		Material	Hose i/d [mm]	Pressure [bar]	Code no.	
	M 22 x 1,5	DKO	stainless	10	1500	00.05979.0019 01.05991.0001	
	M 24 x 1,5	DKO	stainless	12	1800	00.05979.0016 01.05991.0002	
	M 36 x 2	DKO	stainless	20	1600	00.05979.0017 01.05991.0003	
	M 42 x 2	DKO	stainless	25	1000	00.05979.0018 01.05991.0004*	

9	Conn. thread, both ends		Material	Hose i/d [mm]	Pressure [bar]	Code no.	
	M 18 x 1,5	DKL	stainless	10	460	upon request	
	M 22 x 1,5	DKL	stainless	12	450	00.05991.0011	
	M 24 x 1,5	DKO	stainless	12	1800	00.05991.0005	
	M 30 x 1,5	DKM	stainless	20	350	00.05991.0010	
	M 30 x 2	DKO	stainless	16	1600	00.05991.0015	
	M 36 x 2	DKO	stainless	20	1600	00.05991.0007	
	M 38 x 1,5	DKM	steel	25	280	upon request	
M 42 x 2	DKO	stainless	25	1000	00.05991.0009		

\* 1500 bar upon request

	<p><b>Use Silver Goop (code no. 04.00982.0010) as lubricant for stainless steel alloys!</b>  <b>Not applicable for aluminum and magnesium!</b></p>
--	--

