

SUCTION SIDE FITTINGS - ACCESSORIES

11.H.1 – 09/18

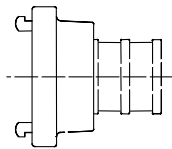
Suction and pressure hoses for supply water

Complete with fittings

i/d [mm]	Flow rate [l/min.]	Max. op. pressure [bar]	Hose type	Coupling	Hose length [m]	Code no.
50	max. 100	8	Spiral bound suction and pressure hose	C-coupling DIN 14321	5	04.04600.0070
					10	04.04600.0097
		16	Fire hose with PVC coating	C-coupling DIN 14302	20	04.04600.0861
75	max. 200	8	Spiral bound suction and pressure hose	B-coupling DIN 14322	3	04.04600.0559
		16	Fire hose with PVC coating	B-coupling DIN 14303	20	04.04600.0888

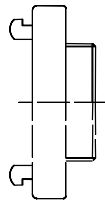
Couplings for suction and pressure hoses

Hose coupling



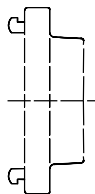
Coupling	i/d [mm]	Flow rate [l/min.]	Code no.
C-suction, DIN 14321	52	max. 100	02.01496.0001
B-suction, DIN 14322	75	max. 200	02.01496.0002

C threaded coupling



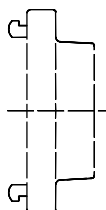
Coupling	Thread	Flow rate [l/min.]	Code no.
C-fixed coupling, DIN 14317 / 14307	G 1" male	max. 100	02.01495.0018
	G 1 ¼" male		02.01495.0010
	G 1 ½" male		02.01495.0008
	G 2" female		02.01495.0001
	G 2" male		02.01495.0004
	G 2 ½" female		02.01495.0007
	G 2 ½" male		02.01495.0003

B threaded coupling



Coupling	Thread	Flow rate [l/min.]	Code no.
B-fixed coupling, DIN 14308	G 2" female	max. 200	02.01495.0011
	G 2 ½" female		02.01495.0002
	G 3" female		02.01495.0006

Pressure coupling
Blind coupling



Coupling	i/d [mm]	Flow rate [l/min.]	Code no.
C-pressure coupling, DIN 14302	60	max. 100	02.01497.0002
B-pressure coupling, DIN 14303	83	max. 200	02.01497.0001
C-pressure coupling, DIN 14311	52	--	02.01494.0001
B-pressure coupling, DIN 14312	75	--	02.01494.0002

	Coupling size	Code no.
Adapter	A to B	02.01495.0051
	B to C	02.01495.0052
	C to GEKA	00.00134.0353

HAMMELMANN®

SUCTION SIDE FITTINGS - ACCESSORIES

11.H.2 – 09/18

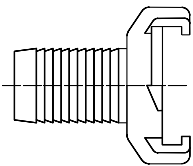
Pressure hose for suction water with GEKA coupling

Complete with fittings

i/d	Flow rate [l/min.]	Op. pressure [bar]	Coupling	Hose length [m]	Code no.
1"	max. 22	25	GEKA couplings	5	00.04590.0013
				10	00.04590.0014
				2	00.04590.0015

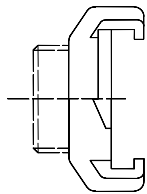
GEKA couplings

Hose coupling



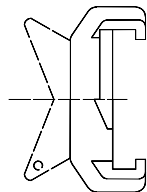
i/d	Flow rate [l/min.]	Code no.
1"	max. 22	04.05682.0019

Thread coupling



Thread	Flow rate [l/min.]	Code no.
G 1/2" male	max. 22	04.05311.0003
G 3/4" male	max. 22	04.05311.0004
G 1" male	max. 22	04.05311.0005
G 1 1/4" male	max. 22	04.05311.0006
G 1 1/2" male	max. 22	04.05311.0007

Blind coupling

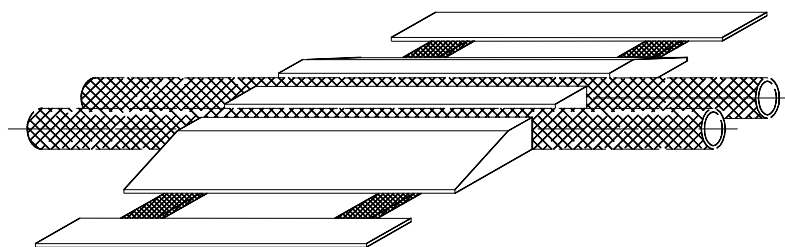


	Code no.
Suitable for all GEKA coupling	04.02253.0002

Hose size	Code no.
B-Hose	04.00505.0001
High pressure hose, C-hose	04.00505.0002

Hose bridges

- Of wood with synthetic belts.
- To DIN 14820
- Dimensions:
 - Height: 90 mm
 - Width: 700 mm
 - Length: 935 mm



HAMMELMANN®