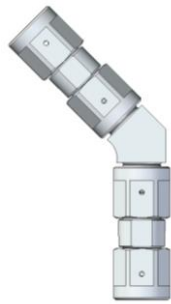


DISCHARGE FITTINGS, BLOCK BALL VALVES, DOUBLE UNION NUTS AND ELBOW FITTINGS

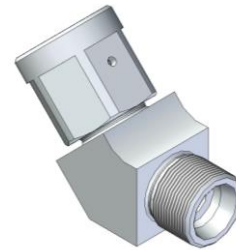
08.E.2 – 09/18



4



5



6

ELBOW FITTINGS 45° for union nuts both ends							
4	Conn. thread, both ends		Material	Hose i/d [mm]	Pressure [bar]	Code no.	
	M 18 x 1.5	DKL	stainless steel	10	460	upon request	
	M 22 x 1.5	DKO-L	stainless steel	10	750	upon request	
	M 22 x 1.5	DKL	stainless steel	12	450	upon request	
	M 22 x 1.5	DKO	stainless steel	10	1500	(2x) (1x)	00.05979.0019 01.05991.0005
	M 24 x 1.5	DKO	stainless steel	12	1800	(2x) (1x)	00.05979.0016 01.05991.0006
	M 36 x 2	DKO	stainless steel	20	1600	(2x) (1x)	00.05979.0017 01.05991.0007
	M 42 x 2	DKO	stainless steel	25	1000	(2x) (1x)	00.05979.0018 01.05991.0008*

ELBOW FITTINGS 45° on one side cap nut for pressure discharge, on the other side a male thread							
5	Conn. thread, both ends		Material	Hose i/d [mm]	Pressure [bar]	Code no.	
	M 22 x 1.5	DKO	stainless steel	10	1500	00.05979.0019 01.05991.0005	
	M 24 x 1.5	DKO	stainless steel	12	1800	00.05979.0016 01.05991.0006	
	M 36 x 2	DKO	stainless steel	20	1600	00.05979.0017 01.05991.0007	
	M 42 x 2	DKO	stainless steel	25	1000	00.05979.0018 01.05991.0008*	

6	Conn. thread, both ends		Material	Hose i/d [mm]	Pressure [bar]	Code no.	
	M 18 x 1.5	DKL	stainless steel	10	460	upon request	
	M 22 x 1.5	DKL	stainless steel	12	750	upon request	
	M 24 x 1.5	DKO	stainless steel	12	1800	00.05991.0006	
	M 36 x 2	DKO	stainless steel	20	1600	00.05991.0008	

* 1500 bar upon request.

	<p>Use Silver Goop (code no. 04.00982.0010) as lubricant for stainless steel alloys! Not applicable for aluminum and magnesium!</p>
--	--

